



GAMMON TECHNICAL PRODUCTS, INC.
 P.O. BOX 400 - 2300 HWY 34
 MANASQUAN, N.J. 08736

PHONE 732-223-4600
 FAX 732-223-5778

WEBSITE www.gammontech.com
 STORE www.gammontechstore.com

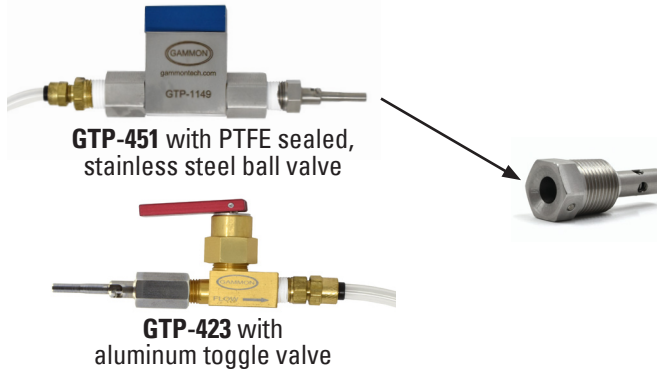
**PRESSURE
 AND SAMPLING
 ADAPTERS**

**BULLETIN 46
 (10-19)**

PRESSURE AND SAMPLING ADAPTERS

The versatile **Jet Test QD®** has many uses other than those shown on Bulletin 14. This permanently installed, impact resistant, quick disconnect is unique because only its stainless steel hex is exposed.

See the reverse side of this page for components and variations of these two assemblies.



Standard Jet Test QD®s require the long actuator. Refueling nozzles such as those made by Avery Hardoll (now known as Meggitt) use a shorter actuator because the long version would interfere with the nozzle strainer. Short versions have suffix S or AH in the model number.

GTP-1173 consists of GTP-1174 gauge and GTP-1173 actuator, 1/8" NPT.

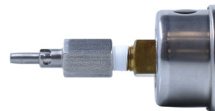


GTP-1173A is just the actuator (no gauge)



GTP-1174
 NEW AND IMPROVED
 PRESSURE GAUGE

GTP-1175 is the same as above, except the short or AH version



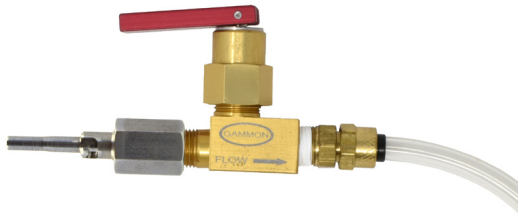
0-100psi
 Liquid filled
 Center back mount
 1/8" NPT male

GTP-1175A is just the actuator (no gauge)



For stainless steel pipe fittings, quick disconnects, and standard sampling kits, see Bulletin 3.

SELECTING CORRECT ACTUATOR (CONNECTOR) FOR GTP-423 AND GTP-451 SHUT-OFF VALVES



GTP-423 (standard model) has GTP-1173A actuator for connection to GTP-235 Jet Test QD® as shown above

GTP-451 (standard model) has GTP-235-2 actuator for connection to GTP-235 Jet Test QD® as shown above

GTP-423-1 has GTP-722-2 commercial standard actuator

GTP-451-1 has HN-4 adapter and GTP-722 commercial standard actuator

GTP-423-2 has GTP-1175A short actuator for connection to AH and S Jet Test QD®s

GTP-451-2 has GTP-235AH actuator for connection to AH and S Jet Test QD®s

GTP-423-3 has GTP-1171D actuator for connection to Shell fittings

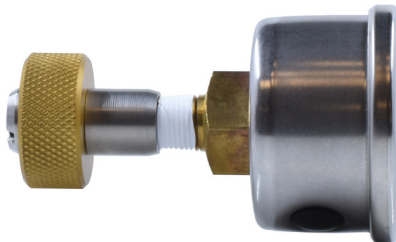
GTP-451-3 has GTP-1171D actuator and RHN4-2 adapter for connection to Shell fittings.

GTP-423-4 has GTP-1171C actuator for connection to Air NP/Thermal Controls fittings

GTP-451-4 has GTP-1171C actuator and RHN4-2 adapter for connection to Air BP/Thermal Controls fittings

Refer to Bulletin 3 and Bulletin 14 for descriptions of fittings.

GAUGE CONNECTORS



GTP-1171A fits Flight Refueling numbers 4127335 and 4127365. This is the Shell type connector.

GTP-1171B fits Flight Refueling numbers 4127320 and 4127350. This is the Air BP type connector.



GTP-1171C is the same as A except it does not include the gauge

GTP-1171D is the same as B except it does not include the gauge

COMMERCIAL STANDARD ACTUATOR



GTP-722 1/4" NPT

GTP-722-2 1/8" NPT