



**GAMMON TECHNICAL PRODUCTS, INC.**  
P.O. BOX 400 - 2300 HWY 34  
MANASQUAN, N.J. 08736

PHONE 732-223-4600  
FAX 732-223-5778  
EMAIL [gammontech@gammontech.com](mailto:gammontech@gammontech.com)

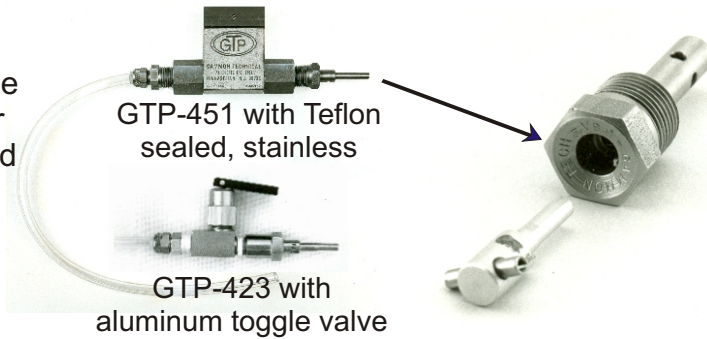
**PRESSURE  
AND  
SAMPLING  
ADAPTERS**

BULLETIN 46  
(7-08)

## PRESSURE & SAMPLING ADAPTERS

The versatile *Jet Test QD*® has many uses other than those shown on Bulletin 14. This permanently installed, impact resistant, quick disconnect is unique because only its stainless steel hex head is exposed

See reverse side of this page for components and variations of these 2 assemblies



Standard Jet Test Qds require the long actuator. Refueling nozzles such as those made by Avery Hardoll (now Known as Meggitt) use a shorter actuator because the long version would interfere with the nozzle strainer. Short versions have suffix S or AH in the model number.

**GTP-1173** (As shown) consists of GTP-1174 gauge and GTP-1173A actuator, 1/8" NPT.

**GTP-1173A** If you want just the actuator (no gauge).

**GTP-1175** (As shown) This is the same as GTP-1173, except the short or AH version.

**GTP-1175A** If you want just the actuator (no gauge).

**GTP-1176** standard length with 1/4" Hose barb fitting.

**GTP-1178** same actuator as above except short AH.



### New and Improved Pressure Gauge **GTP-1174**

0-100 psi, Liquid filled, Center back mount, 1/8" NPT male.

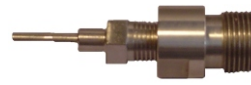
When a test kit has a knurled threaded cap, for connection to a Jet Test QD, use one of these assemblies:



**GTP-1179** Standard Jet Test QD with 13/16"-16 Shell fitting



**GTP-1180** Short or AH Jet Test QD with 13/16"-16 Shell fitting

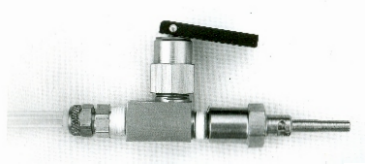


**GTP-1235** Standard Jet Test QD with 3/4" BSP Thermal Controls (Air BP) fitting



**GTP-1254** Short or AH Jet Test QD with 3/4" BSP Thermal Controls (Air BP) fitting

## Selecting correct actuator (connector) for GTP-423 and GTP-451 shut-off valves



Standard **GTP-423** has : GTP-1173A actuator for connection to GTP-235 Jet Test QD, as shown above.

**GTP-423-2** has GTP-1175A short actuator for connection to AH and S Jet Test QD

**GTP-423-1** Has GTP-722-2 commercial standard actuator

**GTP-423-3** Has GTP-1171D actuator for connection to Shell fittings

**GTP-423-4** Has GTP-1171C actuator for connection to Air BP/Thermal Controls fitting.



Standard **GTP-451** has GTP-235-2 actuator for connection to GTP-235 Jet Test QD, as shown above.

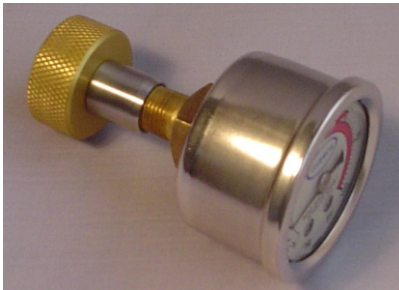
**GTP-451-2** has GTP-235AH actuator for connection to AH and S Jet Test QD

**GTP-451-1** has HN-4 adapter and GTP-722 commercial standard actuator

**GTP-451-3** has GTP-1171D actuator and RHN4-2 adapter for connection to Shell fittings

**GTP-451-4** has GTP-1171C actuator and RHN4-2 adapter for connection to Air BP/Thermal Controls fittings

Refer to Bulletins 3 and 14 for descriptions of fittings

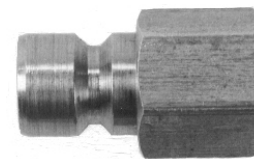


### Gauge Connectors

**GTP-1171A** Fits Flight Refueling Nos. 4127335 and 4127365. This is the Shell type connector.

**GTP-1171B** Fits Flight Refueling Nos. 4127320, 4127345 and 4127350. This is the Air BP type connector.

**GTP-1171C** Same as A except no gauge.  
**GTP-1171D** Same as B except no gauge.



### Commercial Standard Actuator

**GTP-722** 1/4" NPT  
**GTP-722-2** 1/8" NPT

Stainless Steel Pipe Fittings,  
Quick Disconnects and  
Standard Sampling Kits See  
Bulletin 3.