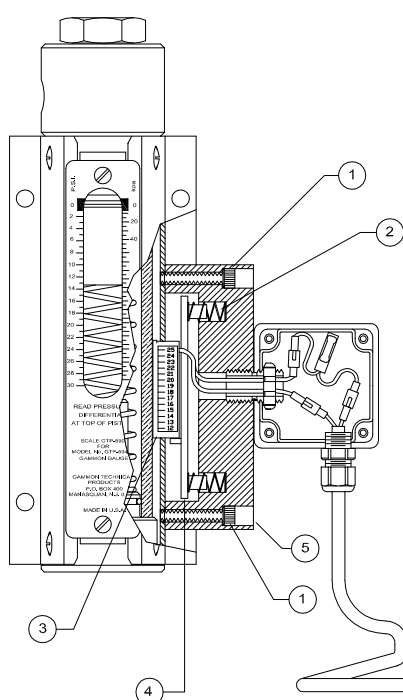
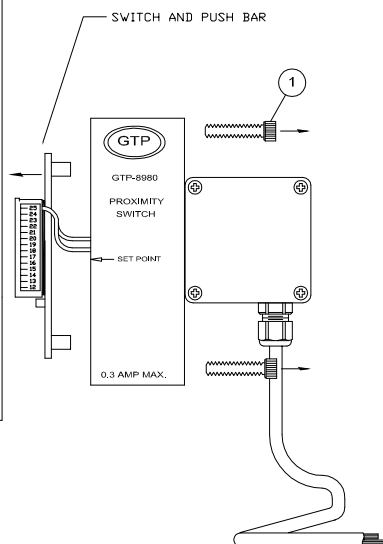


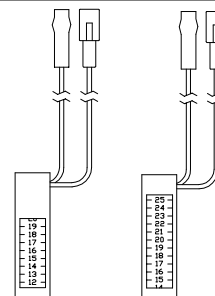
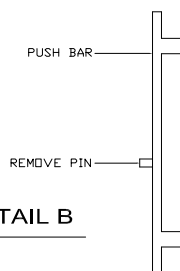
ADJUSTING GTP-8980 DIFFERENTIAL PRESSURE  
SET POINT FROM 15 P.S.I.D. TO 22 P.S.I.D.



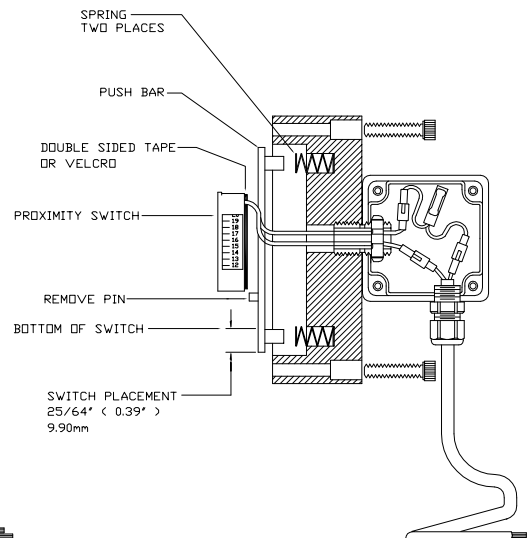
SECTIONAL VIEW  
GAUGE, MOUNTING BLOCK



SIDE VIEW



DETAIL A



SECTIONAL VIEW  
MOUNTING BLOCK

- 1- REMOVE THE 2 SOCKET HEAD SCREWS ( 1 ) FROM THE MOUNTING BLOCK ( 5 ) TO REMOVE IT FROM THE GAUGE AND GAIN ACCESS TO THE SWITCH ( 3 ) AND PUSH BAR ( 4 )
- 2- PULL THE SWITCH ( 3 ) AND PUSH BAR ( 4 ) GENTLY FROM THE CAVITY INSIDE THE MOUNTING BLOCK ( 5 ) THERE ARE TWO SPRINGS ( 2 ) THAT MIGHT ALSO COME OUT WITH THE REMOVAL OF THE PUSH BAR AND SWITCH. BEING CAREFUL NOT TO LOSE THEM SET THEM ASIDE UNTIL YOUR READY TO PUT THE PUSH BAR BACK INTO THE MOUNTING BLOCK
- 3- REMOVE THE SWITCH FROM THE PUSH BAR. THE SWITCH IS HELD IN PLACE WITH DOUBLE SIDED TAPE OR VELCRO.
- 4- NEXT TAKE THE PUSH BAR AND REMOVE THE PIN. A PAIR OF PLIERS SHOULD BE EFFICIENT ENOUGH TO DO THIS. BE CAREFUL NOT TO BEND THE PUSH BAR. SEE DETAIL B
- 5- TAKE THE SWITCH AND MOVE IT DOWN ON THE PUSH BAR TO THE DIMENSION SHOWN IN THE MOUNTING BLOCK SECTIONAL VIEW. ATTACH THE SWITCH BY PUSHING IT ONTO THE PUSH BAR. IF NECESSARY, REPLACE THE DOUBLE SIDED TAPE AS NEEDED.
- 6- PLACE THE SPRINGS INTO THE MOUNTING BLOCK AND THEN INSTALL THE SWITCH AND PUSH BAR BACK INTO THE MOUNTING BLOCK
- 7- TAKE THE MOUNTING BLOCK WITH THE SWITCH AND PLACE IT OVER THE SLOT IN THE GAUGE HOUSING MAKING SURE THE SWITCH IS INSIDE THE SLOT AND TOUCHING THE GLASS. CONNECT THE MOUNTING BLOCK TO THE GAUGE WITH THE TWO SOCKET HEAD SCREWS. DO NOT OVER TIGHTEN !

**NOTE:**

SWITCHES WERE MADE WITH DIFFERENT SCALES AS SHOWN IN DETAIL A ABOVE  
THE SWITCH WILL WORK EVEN THOUGH THE 22 P.S.I.D MARK IS NOT SHOWN.